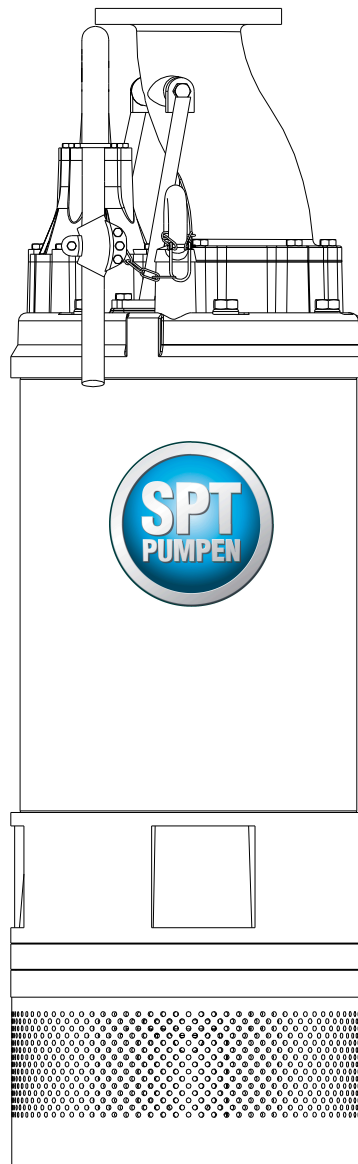


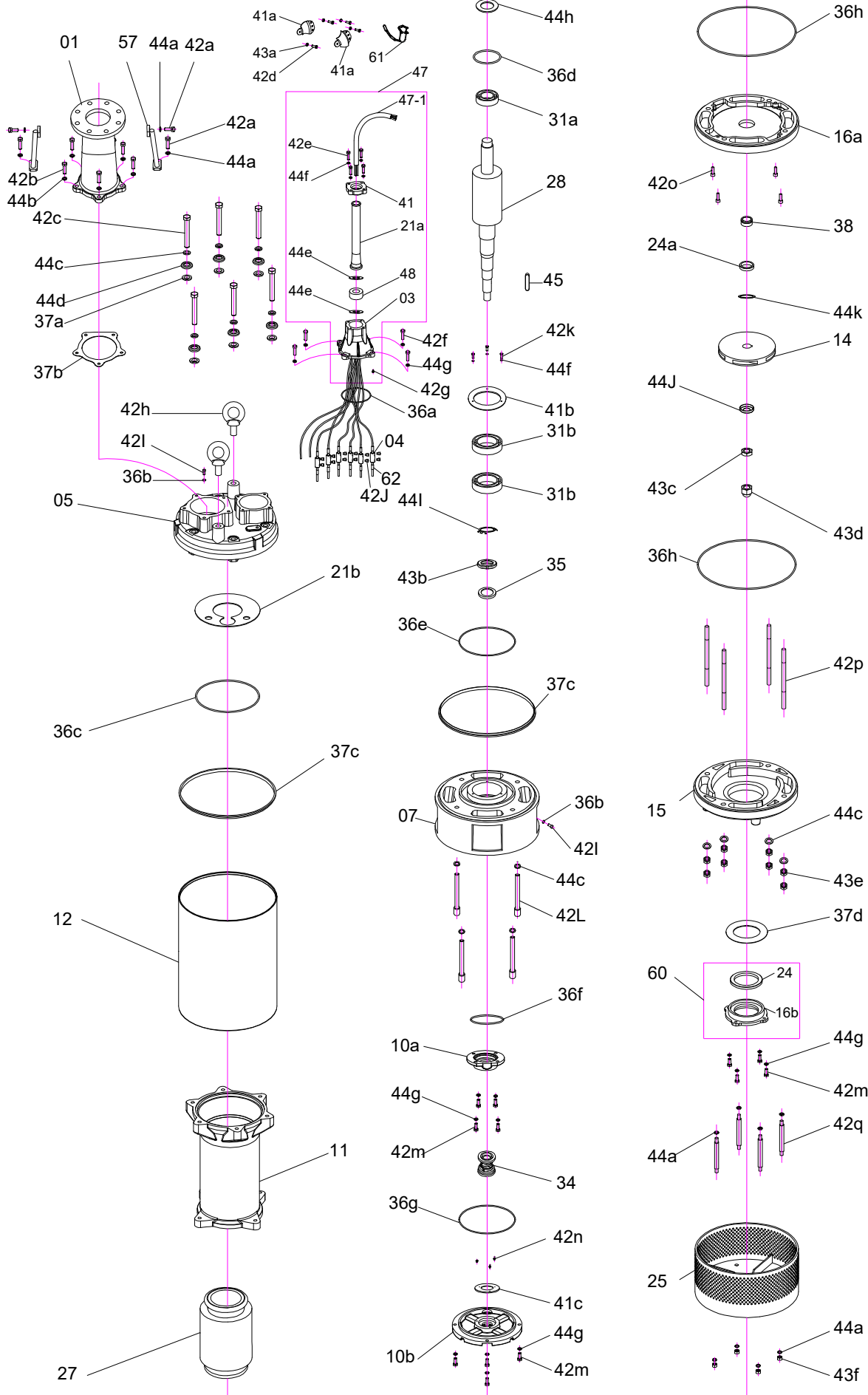


SHL22-30 kW

- SHL 422
- SHL 622
- SHL 430
- SHL 630



11:2021



| Pos. | Bezeichnung | Part name | Q'ty | Material |
|------|--------------------------------------|------------------------------|------|-------------------|
| 01 | Druckabgang | Hose coupling | 1 | Ductile iron |
| 03 | Kabelflansch | Terminal box | 1 | Cast iron |
| 04 | Kabelverbinder | Terminal block | 6 | H62 |
| 05 | Hauptdeckel | Upper cover | 1 | Case iron |
| 07 | Lagergehäuse | Bearing house | 1 | Cast iron |
| 10a | Dichtungssitz oben | Seal bracket | 1 | Cast iron |
| 10b | Dichtungssitz unten | Seal bracket | 1 | Cast iron |
| 11 | Motorgehäuse | Motor casing | 1 | Cast iron |
| 12 | Pumpenmantel | Outer casing | 1 | Steel |
| 14 | Laufrad (Pumpentyp angeben) | Impeller | 1 | High chrome alloy |
| 15 | Saugdeckel (Pumpentyp angeben) | Diffuseer | 1 | Ductile iron |
| 16a | Strömungsplatte | Inlet plate | 1 | Ductile iron |
| 16b | Druckplatte unten | Inlet plate | 1 | Cast iron |
| 21a | Knickschutztülle (Pumpentyp angeben) | Cable tube | 1 | NBR |
| 21b | Isolationsplatte (Pumpentyp angeben) | Protecting cap | 1 | |
| 24 | Ring Druckplatte | Neck ring | 1 | High chrome alloy |
| 24a | Distanzscheibe | Neck ring | 1 | AISI304SS |
| 25 | Sieb (Pumpentyp angeben) | Strainer | 1 | AISI304SS |
| 27 | Stator (Pumpentyp angeben) | Stator | 1 | |
| 28 | Rotor (Pumpentyp angeben) | Rotor | 1 | Shaft:AISI420SS |
| 31a | Lager oben (Pumpentyp angeben) | Bearing | 1 | |
| 31b | Lager unten (Pumpentyp angeben) | Bearing | 2 | |
| 34 | Gleitringdichtung | Mechanical seal | 1 | TC-Sic/Sic-Sic |
| 35 | Öldichtung | Oil seal | 1 | |
| 36a | O-Ring 113,0 x 3,5 mm | O'ring | 1 | NBR |
| 36b | O-Ring 7,1 x 3,1 mm | O'ring | 3 | NBR |
| 36c | O-Ring 248,6 x 5,7 mm | O'ring | 1 | NBR |
| 36d | O-Ring 88,8 x 3,1 mm | O'ring | 1 | NBR |
| 36e | O-Ring 218,6 x 5,7 mm | O'ring | 1 | NBR |
| 36f | O-Ring 83,8 x 3,1 mm | O'ring | 1 | NBR |
| 36g | O-Ring 222,0 x 4,0 mm | O'ring | 1 | NBR |
| 36h | O-Ring 390,0 x 5,0 mm | O'ring | 2 | NBR |
| 37a | Dichtring | Gasket | 6 | NBR |
| 37b | Packung | Gasket | 1 | NBR |
| 37c | Dichtring | Gasket | 2 | NBR |
| 37d | Packung | Gasket | 1 | PVC |
| 38 | Wellenschutzhülse | Shaft sleeve | 1 | AISI304SS |
| 41 | Kabeldruckscheibe | Cable fixing plate | 1 | Cast iron |
| 41a | Zugentlastung | Cable clamping band | 2 | AISI304SS |
| 41b | Lagerscheibe | Bearing fixing plate | 1 | |
| 41c | Lagerscheibe unten | Mechanical seal fixing plate | 1 | |
| 42a | Schraube | Bolt | 4 | AISI304SS |
| 42b | Schraube | Bolt | 5 | AISI304SS |
| 42c | Schraube | Bolt | 6 | AISI304SS |
| 42d | Schraube | Bolt | 4 | AISI304SS |
| 42e | Schraube | Bolt | 4 | AISI304SS |
| 42f | Schraube | Bolt | 4 | AISI304SS |
| 42g | Schraube | Screw | 1 | |
| 42h | Ringschraube | Screw | 2 | AISI304SS |
| 42i | Schraube | Screw | 3 | AISI304SS |
| 42j | Madenschraube | Screw | 12 | AISI304SS |
| 42k | Schraube | Bolt | 3 | AISI304SS |
| 42l | Schraube | Screw | 4 | AISI304SS |
| 42m | Schraube | Bolt | 12 | AISI304SS |
| 42n | Schraube | Screw | 3 | |
| 42o | Schraube | Screw | 4 | AISI304SS |
| 42p | Gewindebolzen | Screw | 4 | AISI304SS |
| 42q | Gewindebolzen | Screw | 4 | AISI420SS |
| 43a | Mutter | Nut | 4 | AISI304SS |
| 43b | Scheibe | Nut | 1 | |
| 43c | Mutter | Nut | 1 | AISI304SS |
| 43d | Hutmutter | Cap nut | 1 | AISI304SS |
| 43e | Mutter | Nut | 8 | AISI304SS |
| 43f | Mutter | Nut | 4 | AISI304SS |
| 44a | Scheibe | Washer | 12 | AISI304SS |
| 44b | Federring | Spring washer | 5 | AISI304SS |
| 44c | Federring | Spring washer | 14 | AISI304SS |
| 44d | Scheibe | Profiled pad | 6 | AISI304SS |
| 44e | Kabelscheibe | Cable washer | 2 | AISI304SS |
| 44f | Federring | Spring washer | 7 | AISI304SS |
| 44g | Federring | Spring washer | 16 | AISI304SS |
| 44h | Federscheibe Lager | Wave pad | 1 | 65Mn |
| 44i | Sicherungsring | Profiled pad | 1 | 65Mn |
| 44j | Schutzscheibe | Profiled pad | 1 | AISI304SS |
| 44k | Laufradscheibe | Impeller washer | 1 | AISI304SS |
| 45 | Keil | Key | 1 | |
| 47 | Kabel (Pumpentyp angeben) | Cable | 1 | |
| 47* | Kabelsatz kpl. (Pumpentyp angeben) | Cable-Terminal box assembly | 1 | |
| 48 | Gummidichtung | Cable bends | 1 | NBR |
| 57 | Stützstrebe | Rod | 2 | |
| 60 | Druckplatteneinheit kpl. | Neck assembly | 1 | |
| 61 | Kette | Chain | 2 | |
| 62 | Kabelverbinder | Connecting terminal | 12 | |

Bei Ersatzteilbestellungen bitte Pumpentyp, Ser. Nr. und Pos. Nr. angeben!
For spare part orders please specify pump type, Ser. no. and Pos. no. !